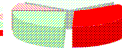


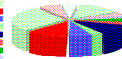
# docuFORM GmbH

## Mercury VIPP®

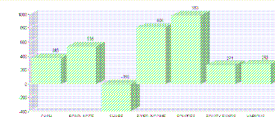
Asset Allocation Summary				2 JUL 1997	
Asset Class	Market Value	%			
BOND NOTE	626,877.36	27.9%			
VARIABLE	25,802.43	1.17%			
CASH	37,246.28	1.70%			
SHARE	1,221,338.43	55.2%			
<b>TOTAL</b>	<b>2,211,514.47</b>	<b>100.0%</b>			



Currency Allocation Summary				
Currency	Market Value (USD)	FX Rate	Market Value (USD)	%
AUSTRALIAN DOLLAR	37,726.02	1.0762	35,293.48	3.24%
SWISS FRANC	119,738.00	0.9753	115,772.25	5.23%
DEUTSCHE MARK	1,287,968.69	0.8165	1,050,208.61	47.94%
DANISH KRONER	1,032,433.23	0.2151	222,097.52	10.04%
FRENCH FRANC	813,568.00	0.1472	125,506.56	5.68%
HONG KONG DOLLARS	166,436.00	0.1846	34,390.92	1.56%
YEN JAPAN	15,345,250.00	0.0121	187,161.28	8.46%
MALAYSIAN RINGGIT	37,236.00	0.5662	21,062.64	0.95%
NEW ZEALAND DOLLARS	72,216.00	0.6694	49,944.24	2.26%
PHILIPPINE PESOS	89,238.00	0.0241	37,027.27	1.67%
SINGAPORE DOLLAR	62,336.42	0.6684	42,368.60	1.92%
US DOLLAR	175,556.24	1.4293	265,921.10	11.98%
<b>TOTAL</b>			<b>2,211,514.47</b>	<b>100.0%</b>



Period from 1 January 1997 to 2 July 1997				
Asset Class	Carb at Start \$USD	Total Gains/Losses \$USD	Carb at End \$USD	Performance
CASH	1,220.10	1,602.20	1,007.24	2.86%
BOND NOTE	0.00	3,737.23	1,977.24	5.38%
SHARE	-2,165.25	47,094.96	21,612.26	-3.96%
FIXED INCOME	10,313.41	19,423.50	3,188.65	4.88%
EQUITIES	-43,365.07	17,568.50	1,420.57	9.83%
EQUITY FUNDS	-16,429.67	4,668.28	582.29	2.71%
VARIABLE	0.00	709.64	0.00	2.89%



### What is Mercury?

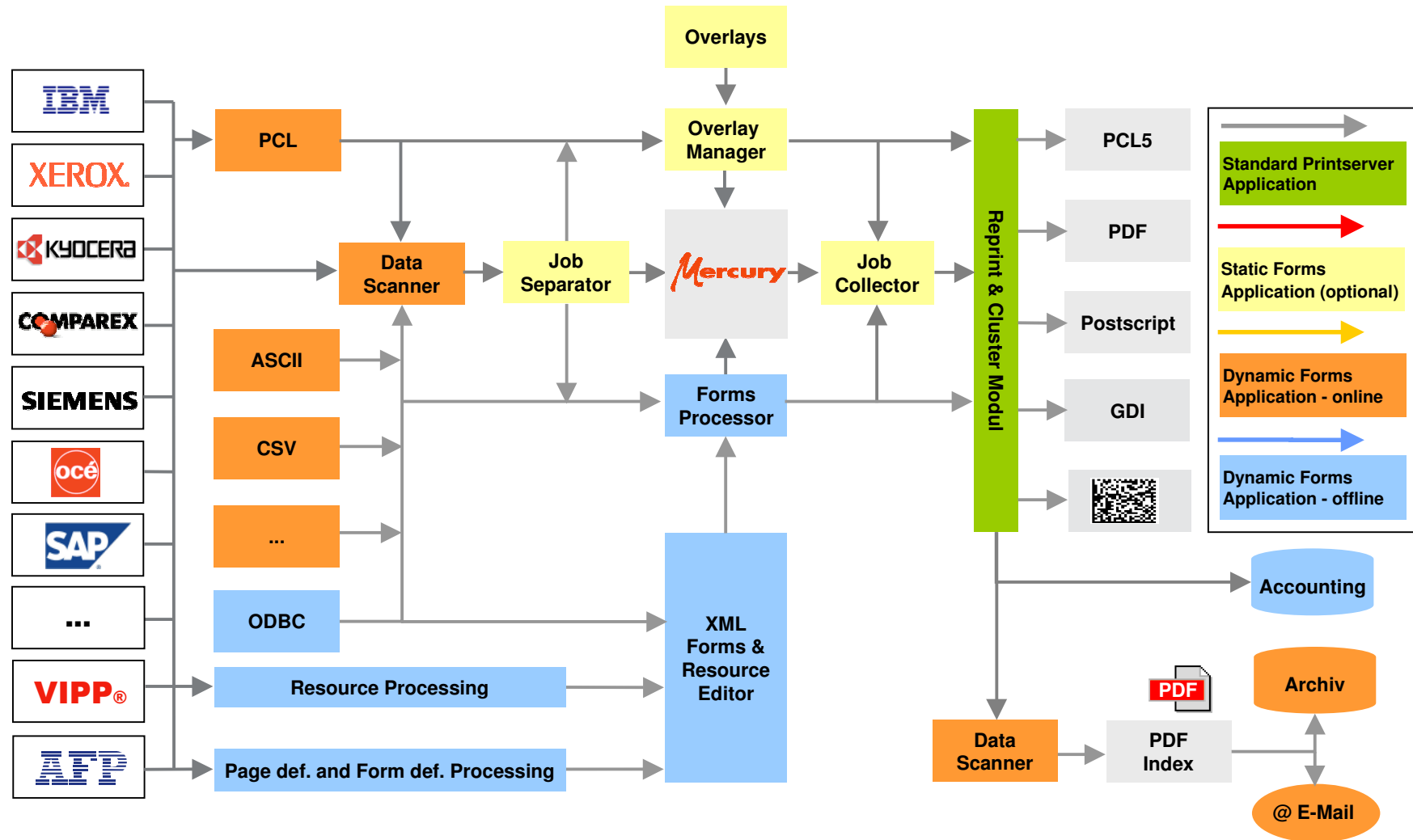
- Mercury is a modular Print & Output Management system
- Mercury is able to communicate with Windows and Linux systems, and in addition also with every host and AS/400 system
- Print data streams can be converted to standard PCL5, PS, PDF or GDI format
- Forms management for static and dynamic forms
- Barcode and document workflow
- Accounting, Follow2Print and Secure Printing
- Result:

With server based intelligence print data are processed or converted, following multiple criteria, for being printed with standard printing systems!

### What are the advantages and benefits of Mercury?

- Mercury is the bridge between host, office and AS/400 world
- With print data conversion, Mercury provides independence of manufacturers and hardware
- The combined usage of all resources results in a high level of saving potential at the customer
- Overlay and Forms management replace cost-intensive matrix printing systems and make the usage of pre-printed paper forms unnecessary
- The implementation of a customer's workflow with Mercury saves time and costs with concurrent safeguarding of all prints.
- Accounting detects hidden costs and offers extensive transparency 'around all kinds of printing'

Schematic Overview : New VIPP Emulation



### VIPP - Variable Data Intelligent Postscript Printware

is a page description language developed by Xerox. This language is based on PostScript and supports separation of variable and constant parts of pages being printed.

VIPP processes data streams in native mode, line mode, database mode and XML mode. This allows e.g. re-formatting and colouring of line mode output created by COBOL or CICS applications for fan fold printing in data centres. VIPP also supports database formats using variable or constant record length as e.g. also output from SAP and other client / server applications.

### Basic Processing Modes for VIPP Data Streams

- In the (default) **native mode** postscript commands are comprised with VIPP commands.
- In **line mode** mode a non postscript datastream is processed by the single preceding VIPP command STARTLM. Within this command all necessary actions are defined to handle the following page oriented text data.
- In the **database mode** a non postscript datastream is processed by the single VIPP command STARTDBM. The database mode is record oriented. It reads one record at a time and calls the database master (DBM), which processes the record data.
- In the **XML mode** a xml data stream is processed by the single VIPP command STARTXML.

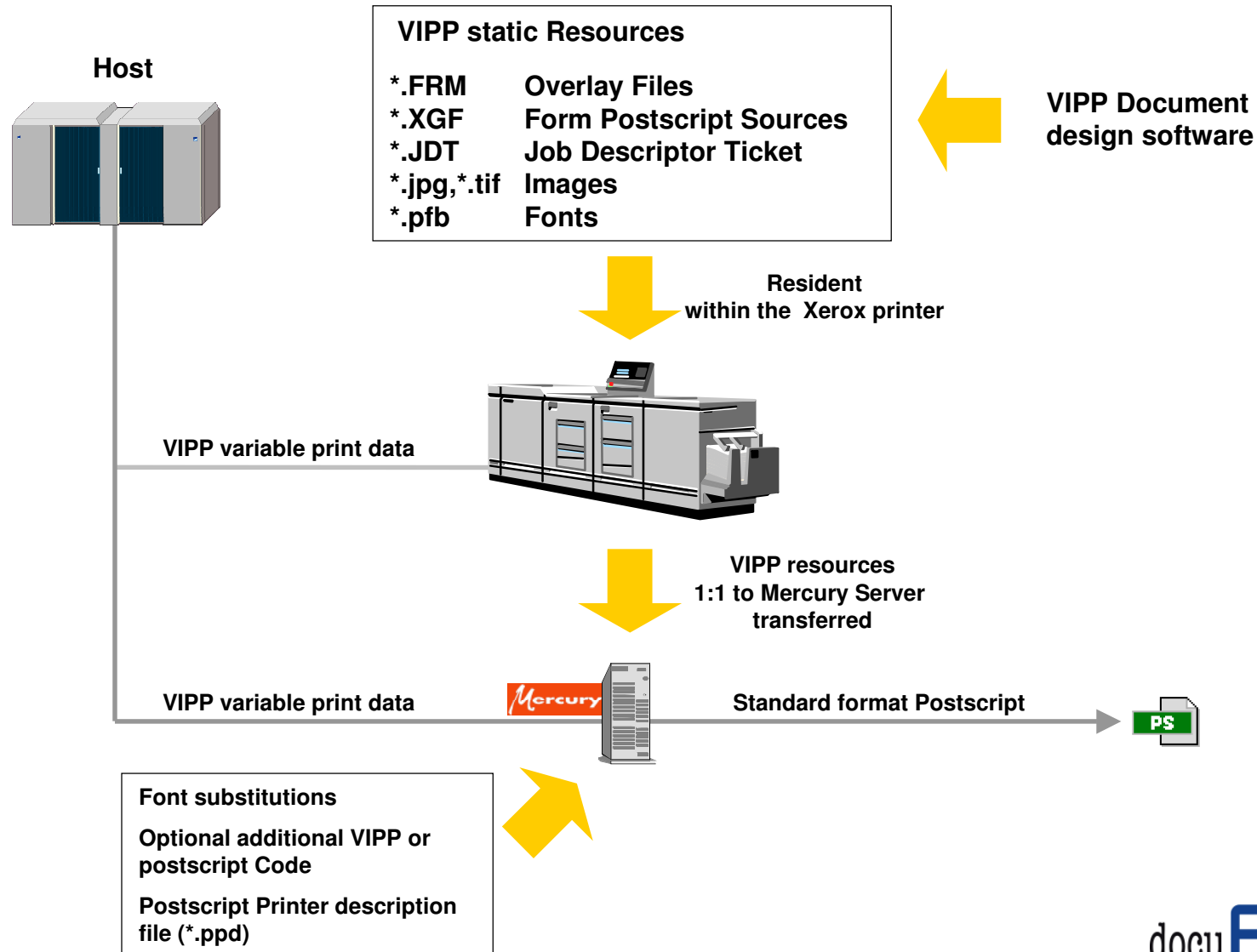
### Some VIPP Features (1)

- Optimal performance for image and database applications.
- Direct input of TIFF, JPEG, PostScript, Text and EPS.
- Highlighting of text by lines, boxes, shading and outlines.
- Text reflow across frames and pages.
- Caching of pre-rasterised resources.
- Output of line mode data on Postscript devices.
- Output of XML data, forms and logos in Postscript.
- Output of Code 39, Code 128, EAN, UPC, 2of5, POSTNET, PDF417 and Maxicode barcode.
- Provides direct access to PostScript PDL, this enables scaling and rotation of Postscript fonts.

### Some VIPP Features (2)

- Allows you to take full advantage of powerful PostScript features. without investing in costly PostScript training.
- Enables VIPP document design using third party or Xerox application design tools (for example Xerox VIPP IDE or Vitesse from Elixir).
- Production of data-driven graphics (e.g. bar and pie diagrams) from variable input data.

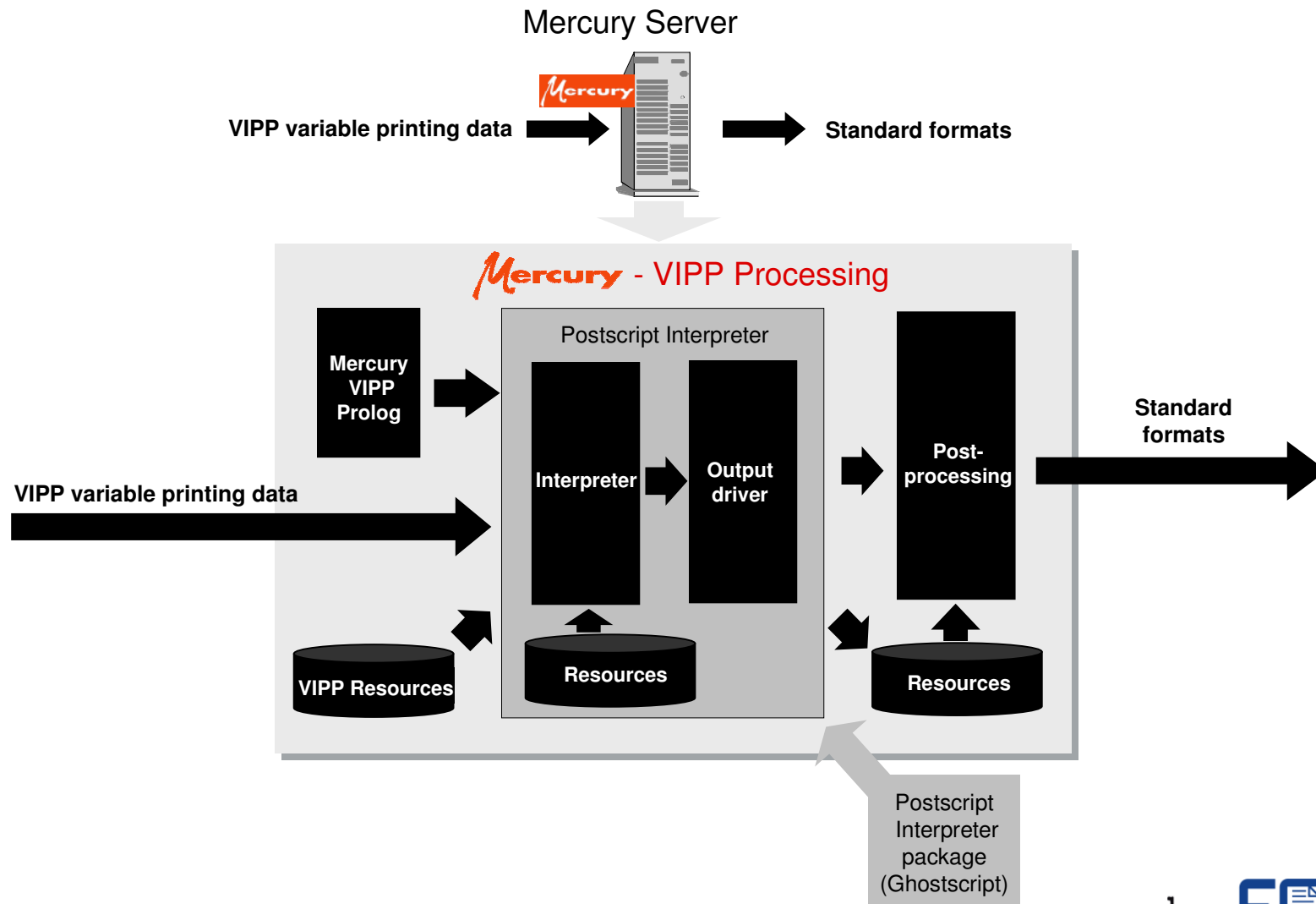
## Schematic Overview



### Selection of VIPP Creation software:

- VIPP IDE from Xerox
- Vitesse from Elixir
- Transformation Suite from Elixir
- Document Design System from Red Titan
- Autograph from Document Sciences
- N-Series Server from Dataline Systems
- DocuRight from FirstLogic
- DataMerge from Banta
- PrintShop Mail from Atlas Software BV
- D.A.R.T. from Dataline Systems
- Papyrus from ISIS

## Mercury VIPP Implementation Details



## Screenshots of the VIPP Configuration

The image displays three overlapping screenshots of the Mercury VIPP software interface:

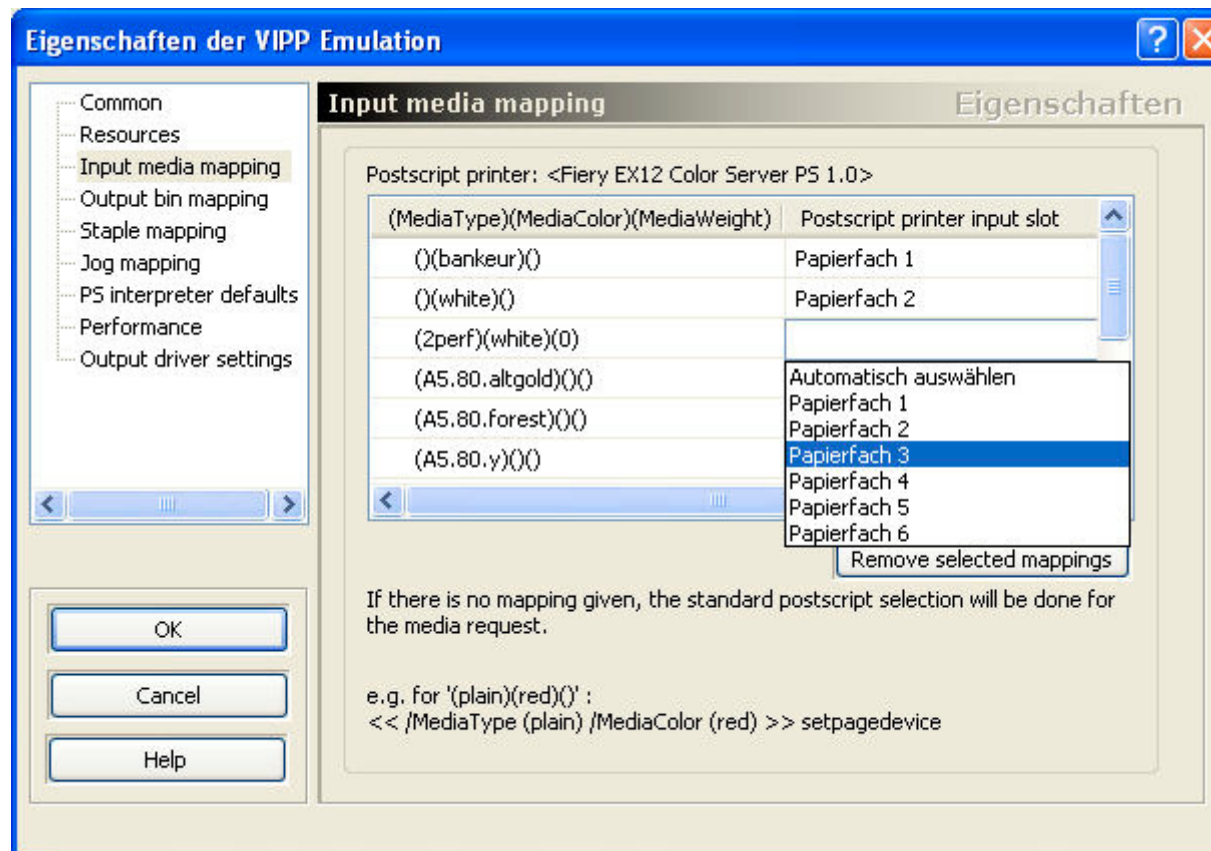
- Mercury (VIPP - Administrator):** The main window showing a print process for 'W2K:Mercury.ma.docuform.de/VIPP'. The 'Job Properties' pane indicates 'Ready, waiting for jobs...'. The interface includes menu options (File, Job, View, Setup, Help) and a toolbar.
- Configuration of VIPP:** A dialog box with tabs for 'Input Interfaces', 'Emulations & Filters', 'Output Interfaces', and 'Logical Printers'. The 'Emulations & Filters' tab is active, showing a table with one entry: 'VIPP Emulation' with ID '1'. Below the table are sections for 'Input Filters' and 'Output Filters', each with an 'Add Filter' button. An 'Events' log at the bottom shows system messages.
- Eigenschaften der VIPP Emulation (top):** A property dialog box with a tree view on the left containing: Common, Resources, Input media mapping, Output bin mapping, Staple mapping, Jog mapping, PS interpreter defaults, Performance, and Output driver settings. The 'Resources' section is expanded, showing fields for 'Global resource path', 'Use VIPP encoding file', 'Use additional VIPP or Postscript resource file', 'Resource path used for temporary files and emulation specific resources', and 'Project resource path', each with a 'Browse...' button.
- Eigenschaften der VIPP Emulation (bottom):** A property dialog box with the 'PS interpreter defaults' section expanded. It includes a 'Paper size' dropdown menu (set to 'A4'), a 'Fixed Paper size' checkbox, and fields for 'Size for portrait in 1/72 Inch' (Width: 595, Height: 842). The 'Output resolution in DPI' section has a checked 'Use default' checkbox.

### Input Media Mapping

- All media type commands within the VIPP emulation can be mapped individually to any desired printing system.
- For the adaption of printer hardware always the specific PPD file of the respective printer type is used.
- The media type requests of the VIPP emulation are recognized automatically and displayed to the user within the VIPP GUI.
- With a simple click, the input VIPP commands can be assigned to standard Postscript commands of the printer.
- If there is no mapping available, standard Postscript commands are used for the printer.

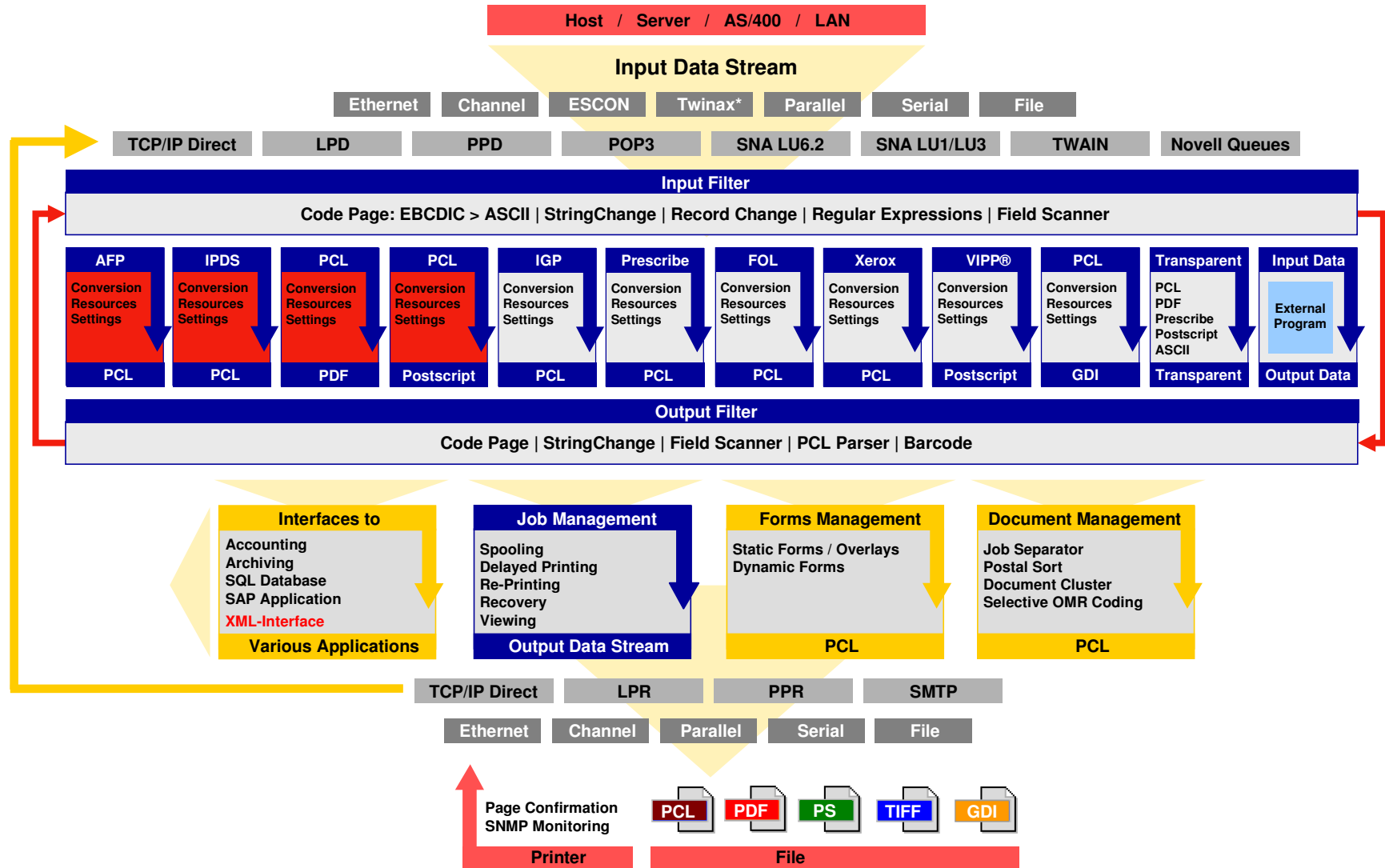
## GUI-Input Media Mapping

- User interface for mapping of VIPP media commands to printer specific Postscript commands (PPD-File)



### Comparing Mercury VIPP with Xerox

- Mercury VIPP is compatible to the original Xerox VIPP language.
- Mercury VIPP converts VIPP data streams to Postscript.
- This makes VIPP data printable on non-Xerox printers. The dependency on Xerox is omitted.
- All original VIPP resources and control files are processed by Mercury VIPP.
- Neither the VIPP creating application nor the VIPP data stream needs to be modified in any way.
- A lot of features already available with Mercury now becomes applicable for VIPP data streams, too.



- Austrian Airlines
- Bausparkasse Mainz
- Bausparkasse Schwäbisch-Hall
- Bertelsmann - Mohn Media
- BG RCI
- BP Refinery Rotterdam B.V.
- Daimler AG
- Doc Morris Versandapotheke
- Häfele GmbH & Co. KG
- Karstadt / Quelle

Austrian 

**BKM**  
Bausparkasse Mainz

Schwäbisch Hall   
Auf diese Steine können Sie bauen

BERTELSMANN  
media worldwide

 **BG RCI**  
Berufsgenossenschaft  
Rohstoffe und chemische Industrie



**DAIMLER**

**DocMorris**  
EUROPAS GRÖSSTE VERSANDAPOTHEKE

**HÄFELE**

**KARSTADT QUELLE** AG

docu**FORM** GmbH

## Extract from our end customer portfolio:

---

18

- KLM Airlines 
- Nadler Feinkost GmbH 
- National Bank of Greece 
- Niederösterreichische Landesregierung 
- Postbank 
- Rhenus Logistik 
- Shell 
- Volkswagen 
- WMF AG 
- und viele andere...

## docuFORM GmbH Karlsruhe

### Headquarter

Händelstr. 11  
D-76185 Karlsruhe  
Phone: +49.721.16198.0  
Fax: +49.721.16198.16  
E-Mail: [info@docuform.de](mailto:info@docuform.de)

### Management, CEO

#### **Martin Denk**

E-Mail: [mdenk@docuform.de](mailto:mdenk@docuform.de)  
based in Karlsruhe, Germany

#### **Reinhard Suhl**

E-Mail: [rsuhl@docuform.de](mailto:rsuhl@docuform.de)  
based in Mannheim, Germany

### Projekt Management, Support Coordination

#### **Jochen Frank**

E-Mail: [jfrank@docuform.de](mailto:jfrank@docuform.de)  
based in Mannheim, Germany

## docuFORM GmbH Mannheim

### R&D, Orders, Sales, Logistics, Support

Lembacher Str. 16-18  
D-68229 Mannheim  
Phone: +49.621.328858.0  
Fax: +49.621.328858.23  
E-Mail: [support@docuform.de](mailto:support@docuform.de)

### Order, Sales Logistics

#### **Beate Dietz**

E-Mail: [bdietz@docuform.de](mailto:bdietz@docuform.de)  
based in Mannheim, Germany

### Support

#### **Ingo Alex**

Phone : +49.6103.4873879  
Mobile : +49.172.9571025  
E-Mail : [ialex@docuform.de](mailto:ialex@docuform.de)

#### **Thomas Oppl**

Phone : +49.69.47866678  
Mobile : +49.172.9571048  
E-Mail : [toppl@docuform.de](mailto:toppl@docuform.de)

## Contact

[info@docuform.de](mailto:info@docuform.de)

[www.docuform.de](http://www.docuform.de)