

# Mercury & FORMS – Document Workflow Solutions

Reprint &  
Cluster

IBM  
Channel

IPDS

Metacode  
LCDS

Forms  
Parser

Job  
Separator

Barcode

Mercury  
Basis

Overlays

EFI

**PIE  
Interface**

Mercury  
Forms

Dynamic  
Forms

SAP

IGP

Linemode

Prescribe

The product Mercury is about a universal print & output management tool. With Mercury you fulfil all requirements of transaction printing. Add-ons concerning overlay & forms management support building of own printing applications or POD applications.

Besides various modules as data conversion or forms management, the PIE module represents one of the most important elements. PIE is an acronym and stands for "Program Interface Emulation".

With PIE the Mercury user gets an interface to external programs or individual applications. Thus he can – embedded into the complete Mercury architecture – easily and quick realise individual requirements.

This once more makes Mercury with its various modules a plug & play solution. Because the PIE module also uses standardised interfaces, every individual extension can be easily integrated into the Mercury workflow.

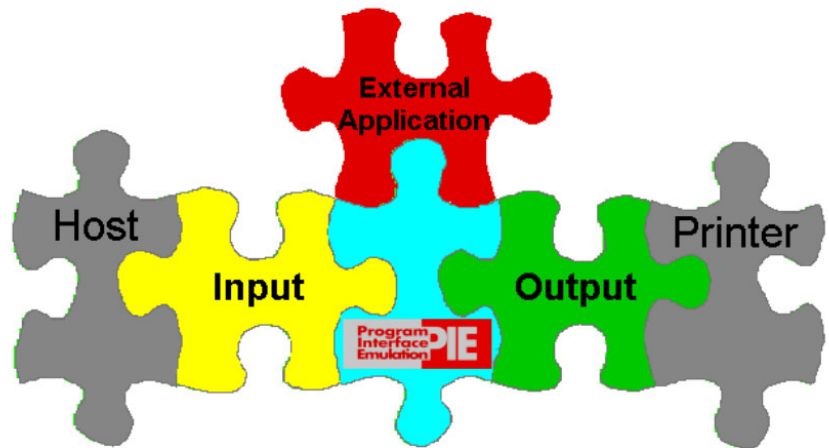
- Modular construction kit
- Plug & play solution
- Server/client concept
- IBM 370 & ESCON connectivity
- IBM IPDS conversion, SNA support
- Xerox Metacode / LCDS conversion
- Prescribe & IGP conversion
- Printing data conversion to PCL / PDF / Postscript
- Overlay & dynamic forms management
- Filters for printer controlling
- Processing of raw data
- Universal data scanner for dynamic forms
- Reprint & cluster functionality
- Printing performance of several 1000ppm
- PIE plugin for postal optimisation
- PIE plugin for document clustering
- PIE plugin for PDF Print with Windows printers
- PIE plugins for workflow solutions

## The PIE as an interface for plugin modules and customer specific applications.

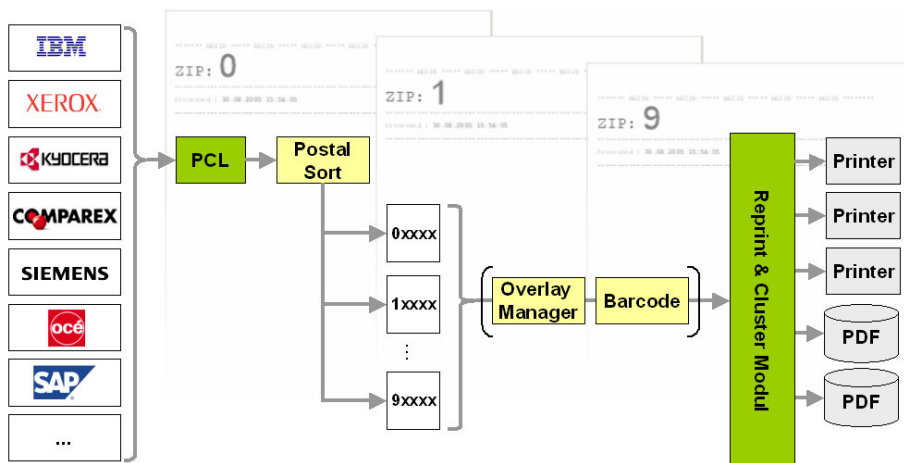
The PIE module provides an interface for external programs. By using the complete Mercury architecture and functionality, incoming data can be passed over to own applications. The processed output data then can be returned to Mercury or printed by the external program itself.

For some applications like postal sort, cluster printing or PDF output to arbitrary windows printers, there are plugin modules already available - ready to use.

The programming interface (API) is well documented and allows to every Mercury user development of his own plugin modules. By this, Mercury becomes a universal tool with unlimited capability



## Example PostalSort: A plugin module for the PIE to reduce postage costs.



Many applications are printing "first in / first out". Especially with mass letters, this results in passing unsorted data records to mail processing.

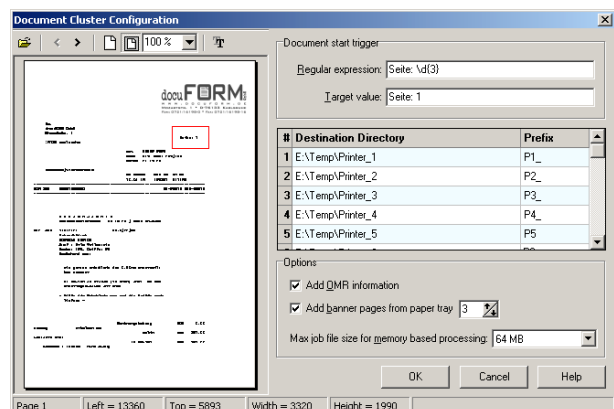
With the PostalSort PIE Plugin, Mercury will sort documents of a single print job by their postal codes. You define the significant positions and Mercury will do the rest. As a result, you will optionally get all documents with OMR coding for control of automatic mail finishing and each postal zone as a separate print job with its documents in sorted order.

While doing so, all additional features of the Mercury system like overlays, barcodes, spooling, re-printing, etc. are still available for your workflow.

## Example DocCluster: Up to eight printers, where others still talk about tandem printing.

Speeding up high volume print jobs by distributing to several printers, this is the approach of tandem printing. With the DocCluster PIE Plugin up to eight printers can be used in parallel.

After definition of a unique textual criterion as the document border, Mercury with this plugin module evenly distributes all documents of a single print job to up to eight printers. Optionally OMR coding for control of automatic mail finishing will be added to all pages at the same time, too. The created partial print jobs then will be picked up by Mercury and passed over to the printers in parallel. Also here, all additional features of the Mercury system like overlays, barcodes, spooling, re-printing, etc. are still available for your workflow.



Another plugin module is the PDFPrint Plugin for printing arbitrary print jobs on every windows printer using the PDF format. This makes impact and Zebra printers available, too. The FaceUp Plugin turns the page order of single sided jobs from 1..n to n..1. But your special application can be realised building a PIE plugin module, too.